

Elements



Z+F LaserControl Elements is the freedom to view and browse your point cloud data without any cost. Besides checking the accuracy status of the device calibration, basic measurement functions are implemented. Furthermore it is the key to access and operate all Z+F products of the entire Z+F IMAGER and Z+F PROFILER family. Download your free version of LaserControl Elements at www.zf-laser.com or contact your local Z+F partner.



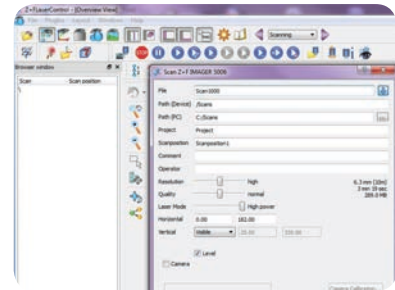
Viewer

Opening a scan, the data is displayed in a high-resolution 2D grayscale view (intensity image). Viewing point clouds from different positions is very easy. Point size and subsample rate are user defined.



Measurement Functions

There are different measurement functions integrated in Z+F LaserControl Elements, to define distances in 2D and 3D very quickly, for instance the height of a room. All measurements are stored in layers and can be displayed at any time.



Direct Scanner Control

Z+F LaserControl supports the entire control of the scanner hardware (Z+F IMAGER series). Direct TCP/IP communication with the scanner device and FTP download to your PC of onboard stored data give best flexibility.

